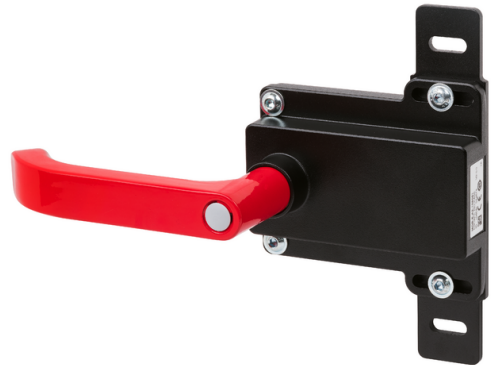


## MGB-E-A2-106051 (Order no. 106051)

### Escape release module MGB-E... pre-assembled on mounting plate

- ▶ Escape release from the danger zone
- ▶ Mounted on mounting plate
- ▶ Signal red door handle
- ▶ Designed for door profiles up to 40 mm
- ▶ Extended actuation axis for thicker doors (available optionally)



### Escape release

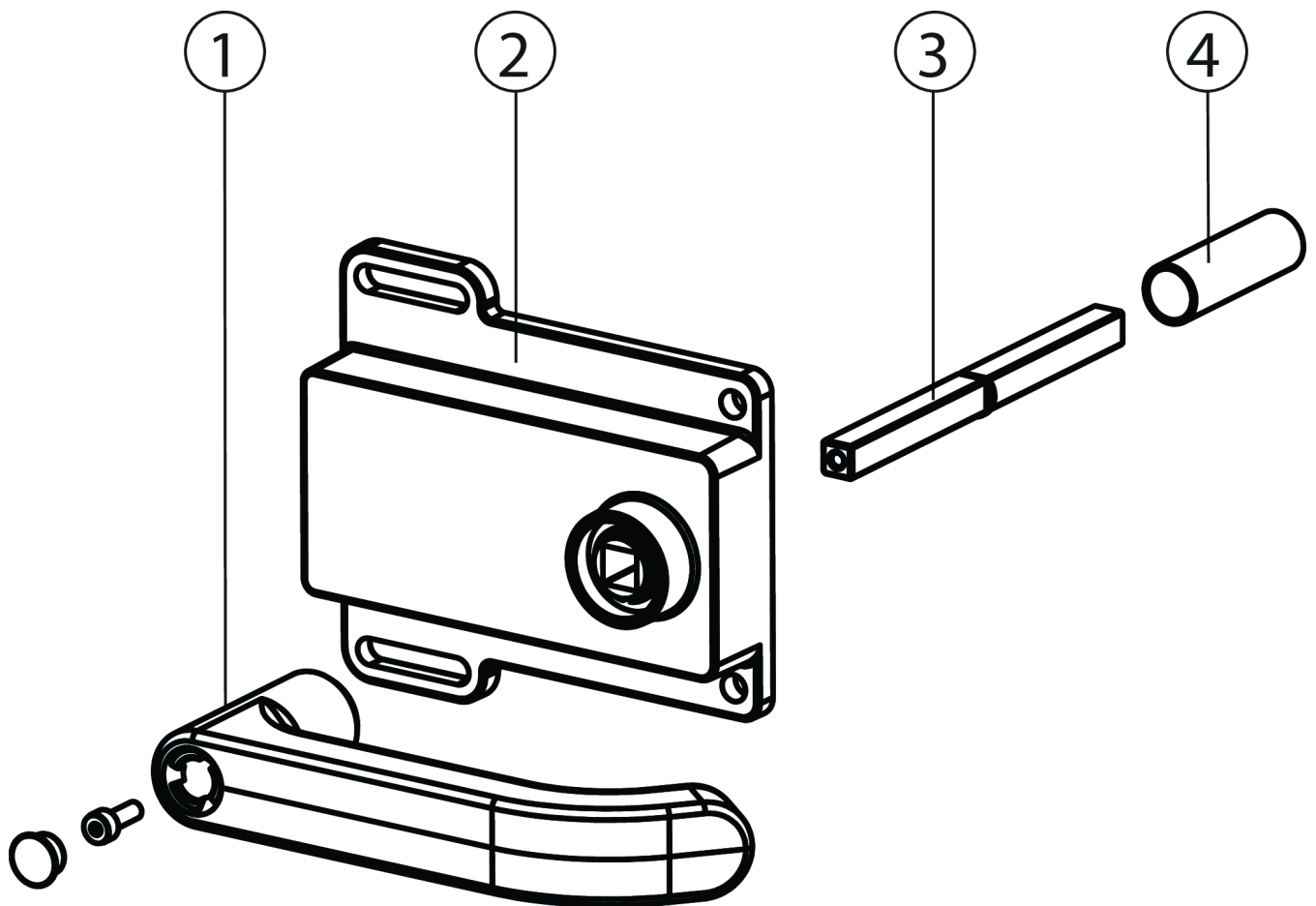
The safety system MGB can be equipped with an escape release module. The escape release enables people shut in to open the locked door from the danger zone. It is only necessary to actuate the door handle.

The actuating direction automatically adapts to the actuating direction of the handle module and does not need to be changed. The actuation axis supplied is suitable for profiles up to 40 mm.

### Extended actuation axis

Optionally, for thicker doors or profiles measuring >40 mm, it is possible to order a 250 mm long actuation axis (instead of 115 mm). The axis can be shortened to the required dimension.

## Dimensional drawings



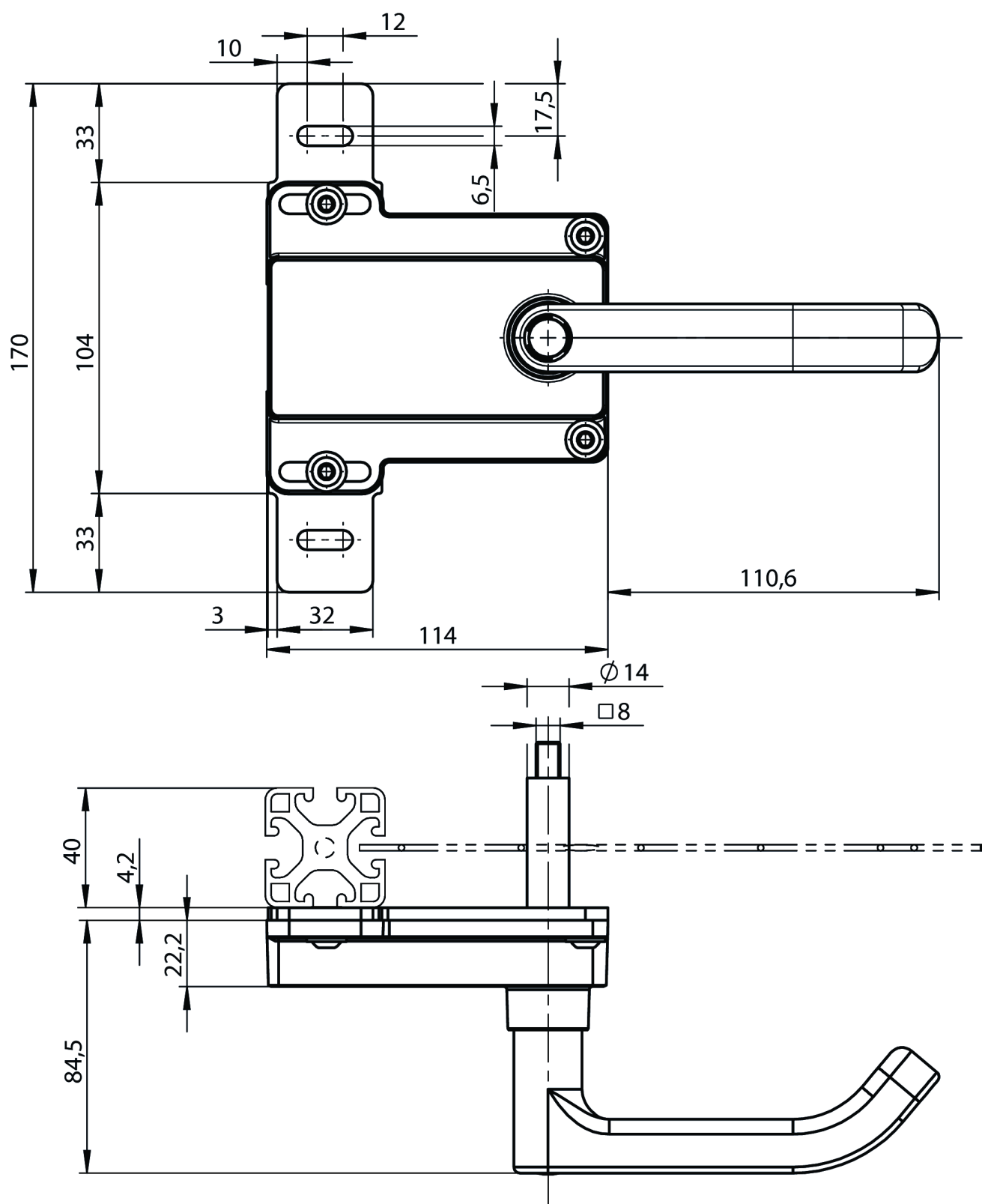
1 Door handle

2 Housing

3 Actuation axis 8 x 8 mm

4 Protective sleeve

## Dimensional drawings



## Technical data

### Mechanical values and environment

Installation orientation	any
Mechanical life	1 x 10 <sup>6</sup>
Ambient temperature	-30 ... +55 °C
Material	
Housing	Die-cast zinc/stainless steel, powder-coated

### Miscellaneous

Product version number	V2.0.0
Additional feature	with mounting plate

## Downloads

All documentation for this material can be found on our website:

<https://www.euchner.de/en-us/a/106051/?#downloads-tab>

**Ordering data**

Ordernumber	106051
Item designation	MGB-E-A2-106051
Gross weight	1,05kg
Global Trade Item Number (GTIN)	4047048006683
Customs tariff number	85389099990
ECLASS	27-27-24-92 Safety-related proximity switch (accessories)

## Accessories

### Function expansion

#### Door handle for MGB-E..., red



**156945**

AY-DHL-R1-156945

- ▶ Aluminum, red anodized
- ▶ For mounting on all MGB escape release modules from version 2.0.

#### Door knob for MGB-E/AE-R..., red



**157018**

AY-DKB-R1-157018

- ▶ Aluminum, red anodized
- ▶ for mounting on all MGB escape release modules from version 2.0.
- ▶ e.g. on sliding doors

#### Extended actuation axis for MGB-E...



**106761**

AY-ERS-250-106761